

Lou Bird  
Dennis Bohler with

*Cloud call 1*

Bass Clarinet



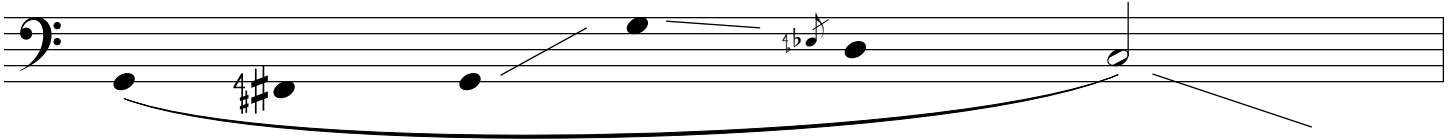
*Cloud call 2*



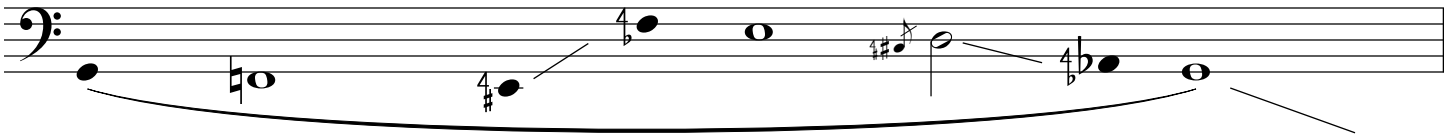
*Cloud call 3*



*Cloud call 4*



*Cloud call 5*



*Cloud call 6*



*Day call 1*

Musical notation for Day call 1, featuring a bass clef and a five-line staff. The notation includes a series of notes with stems and beams, a large slur, and a fermata over the final note.

*Day call 2*

Musical notation for Day call 2, featuring a bass clef and a five-line staff. The notation includes a series of notes with stems and beams, a large slur, and a fermata over the final note.

*Day call 3*

Musical notation for Day call 3, featuring a bass clef and a five-line staff. The notation includes a series of notes with stems and beams, a large slur, and a fermata over the final note.

*Day call 4*

Musical notation for Day call 4, featuring a bass clef and a five-line staff. The notation includes a series of notes with stems and beams, a large slur, and a fermata over the final note.

*Day call 5*

Musical notation for Day call 5, featuring a bass clef and a five-line staff. The notation includes a series of notes with stems and beams, a large slur, and a fermata over the final note.

*Day call 6*

Musical notation for Day call 6, featuring a bass clef and a five-line staff. The notation includes a series of notes with stems and beams, a large slur, and a fermata over the final note.

*Cry Call 1*

Musical notation for Cry Call 1, featuring a bass clef and a series of notes connected by a slur. The notes are: a quarter rest, a quarter note G2, a quarter note F2, a quarter note E2, and a quarter note D2.

*Cry Call 2*

Musical notation for Cry Call 2, featuring a bass clef and a series of notes connected by a slur. The notes are: a quarter rest, a quarter note G2, a quarter note F2, a quarter note E2, a quarter note D2, a quarter note C2, a quarter note B1, a quarter note A1, and a quarter note G1.

*Cry Call 3*

Musical notation for Cry Call 3, featuring a bass clef and a series of notes connected by a slur. The notes are: a quarter rest, a quarter note G2, a quarter note F2, a quarter note E2, a quarter note D2, a quarter note C2, a quarter note B1, a quarter note A1, a quarter note G1, a quarter note F1, and a quarter note E1.

*Cry Call 4*

Musical notation for Cry Call 4, featuring a bass clef and a series of notes connected by a slur. The notes are: a quarter rest, a quarter note G2, a quarter note F2, a quarter note E2, a quarter note D2, a quarter note C2, a quarter note B1, a quarter note A1, a quarter note G1, a quarter note F1, and a quarter note E1.

*Cry Call 5*

Musical notation for Cry Call 5, featuring a bass clef and a series of notes connected by a slur. The notes are: a quarter rest, a quarter note G2, a quarter note F2, a quarter note E2, a quarter note D2, a quarter note C2, a quarter note B1, a quarter note A1, a quarter note G1, a quarter note F1, and a quarter note E1.