

Soprano I

For Jody Gladding and the Vermont Contemporary Music Ensemble

# Three Elastic Experiences

Dennis Báthory-Kitsz

## I. Hawthorne

Slow (♩ = 56)

Long aspirated H at start of note; long one after decrescendi.

1 2

(Hhaa)

10

4

22

4

*mf* *pp*

## II. Mote

Moderate (♩ = c. 108)

34

*mp*(O)

43

51

33

84

*mp*

98

19

117

*mp* *ppp*

2  
127 Three Elastic Experiences

127  
137  
*rit.*  
*pp*

147 **Slow** (♩ = 56) **Fast** (♩ = c. 120)  
Tongue clicks (low, medium, high)\*  
*mf*

152

157

162

167

172

177

182 **Slow** (♩ = 56)

186

11



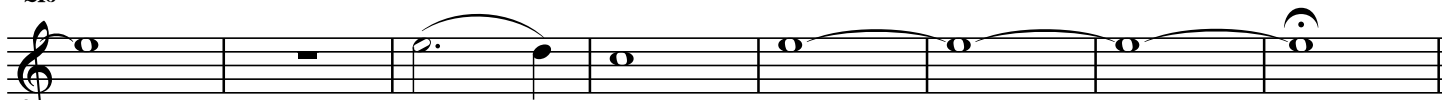
197



206



216



*pppp*

III. Leaf

224



Slow (♩ = 72)

Pitch whisper (on "F" sound) ...



*pp*

232



240

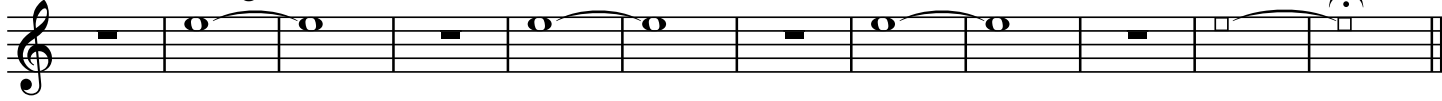
Tongue to roof of mouth (on "L" sound) ...



251

Leaving

Pitch whisper (on "F" sound) ...



*ppp*

*pppp*