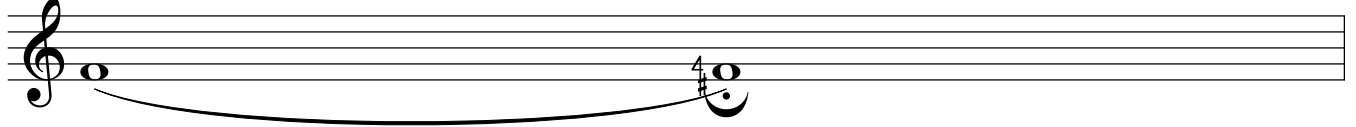
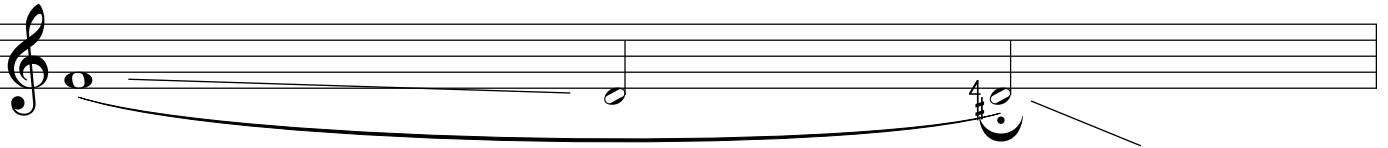


Low bird
dannie batlary bird

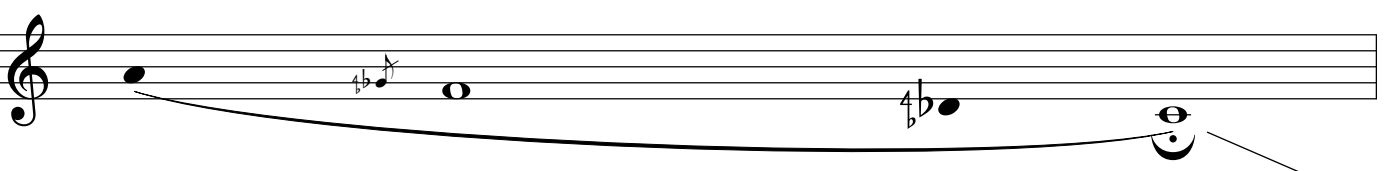
Flute *Cloud call 1*



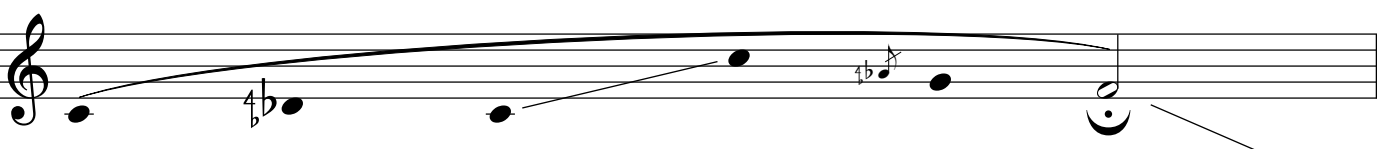
Cloud call 2




Cloud call 3



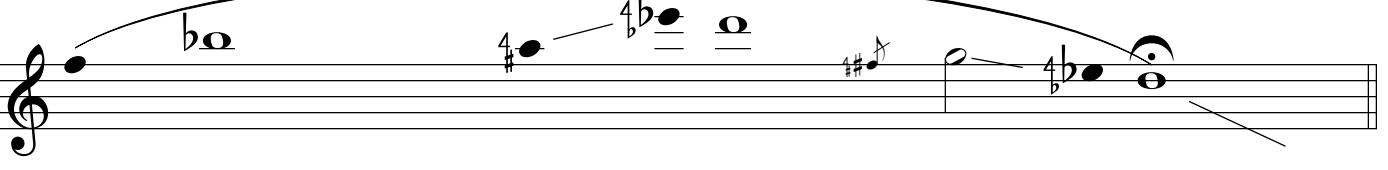
Cloud call 4



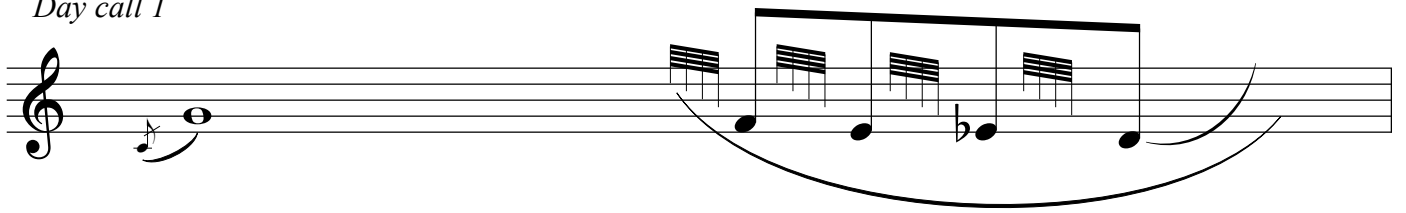
Cloud call 5



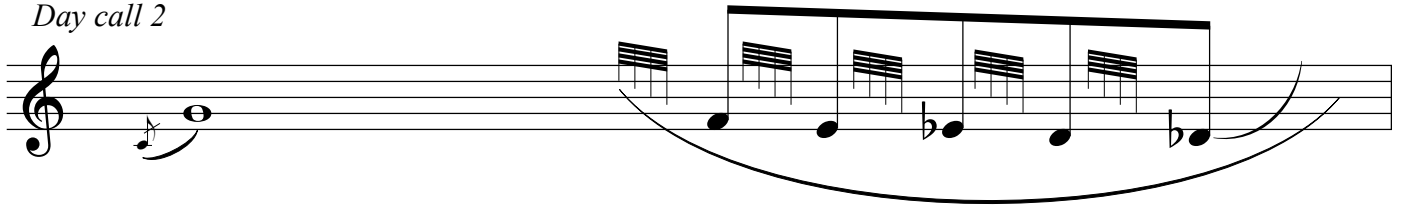
Cloud call 6



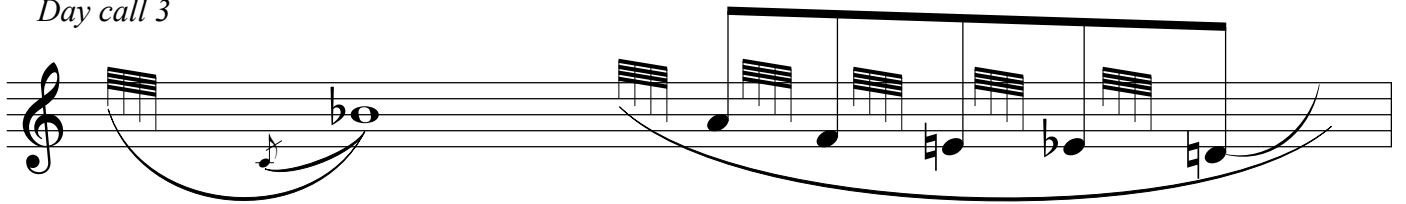
Day call 1



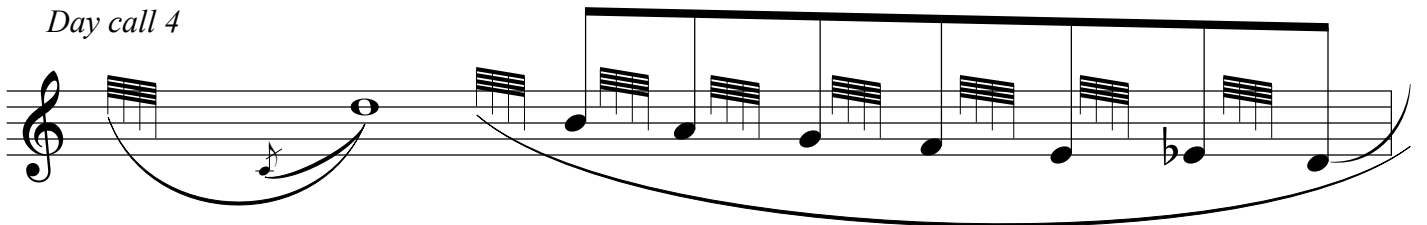
Day call 2



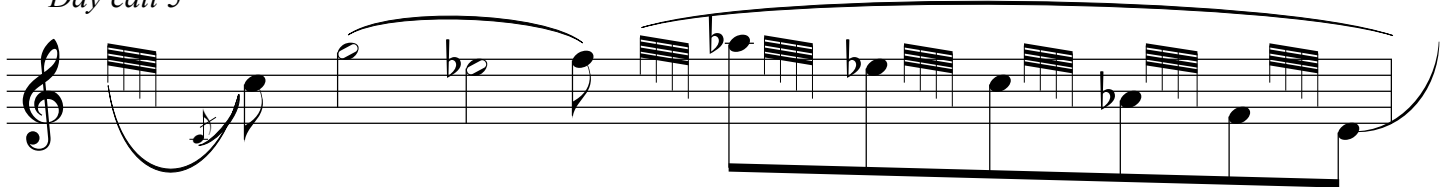
Day call 3



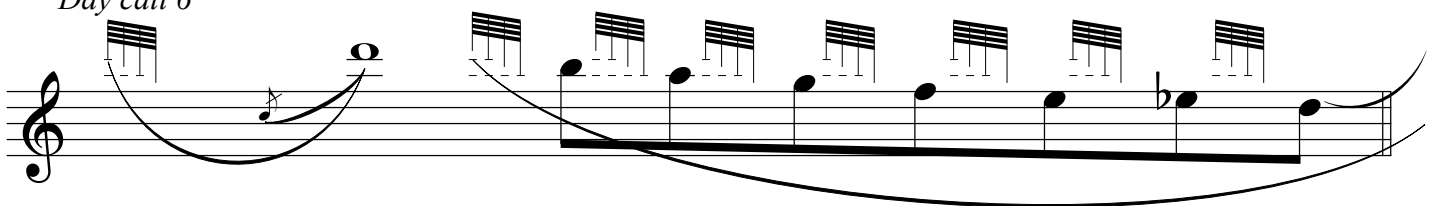
Day call 4



Day call 5



Day call 6



Cry Call 1

Musical notation for Cry Call 1 on a single staff. It begins with a treble clef and a key signature of one flat. The melody consists of a quarter rest, followed by a quarter note G4, a quarter note F4, and a quarter note E4. A slur covers the first two notes. This is followed by a quarter rest, a quarter note D4, and a quarter note C4. A slur covers the last two notes. The piece ends with a double bar line.

Cry Call 2

Musical notation for Cry Call 2 on a single staff. It begins with a treble clef and a key signature of one flat. The melody consists of a quarter rest, followed by a quarter note G4, a quarter note F4, and a quarter note E4. A slur covers the first two notes. This is followed by a quarter rest, a quarter note D4, and a quarter note C4. A slur covers the last two notes. The piece ends with a double bar line.

Cry Call 3

Musical notation for Cry Call 3 on a single staff. It begins with a treble clef and a key signature of one flat. The melody consists of a quarter rest, followed by a quarter note G4, a quarter note F4, and a quarter note E4. A slur covers the first two notes. This is followed by a quarter rest, a quarter note D4, and a quarter note C4. A slur covers the last two notes. The piece ends with a double bar line.

Cry Call 4

Musical notation for Cry Call 4 on a single staff. It begins with a treble clef and a key signature of one flat. The melody consists of a quarter rest, followed by a quarter note G4, a quarter note F4, and a quarter note E4. A slur covers the first two notes. This is followed by a quarter rest, a quarter note D4, and a quarter note C4. A slur covers the last two notes. The piece ends with a double bar line.

Cry Call 5

Musical notation for Cry Call 5 on a single staff. It begins with a treble clef and a key signature of one flat. The melody consists of a quarter rest, followed by a quarter note G4, a quarter note F4, and a quarter note E4. A slur covers the first two notes. This is followed by a quarter rest, a quarter note D4, and a quarter note C4. A slur covers the last two notes. The piece ends with a double bar line.