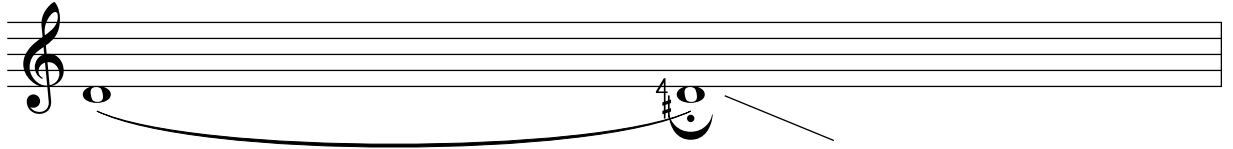


Lou Bird

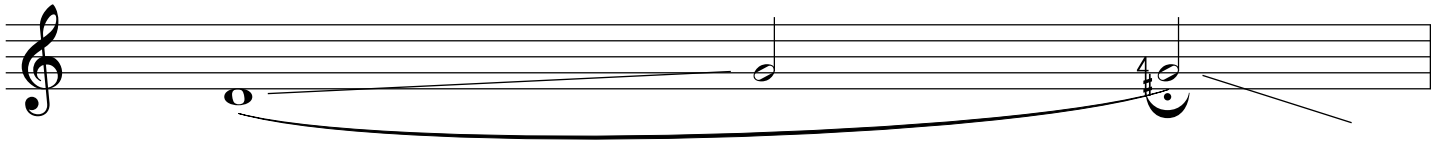
dennis batlary kit

Clarinet

Cloud call 1



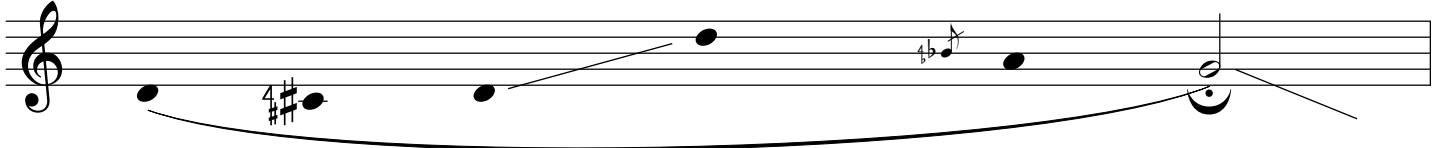
Cloud call 2



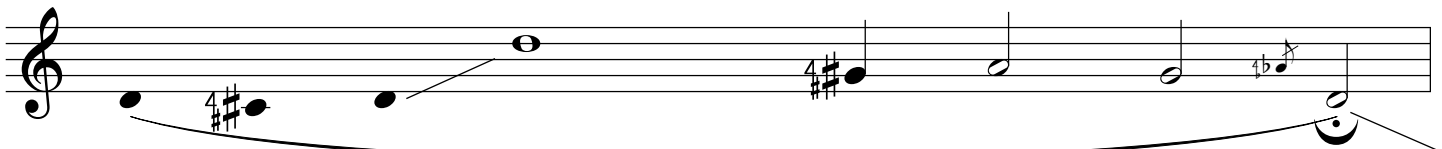
Cloud call 3



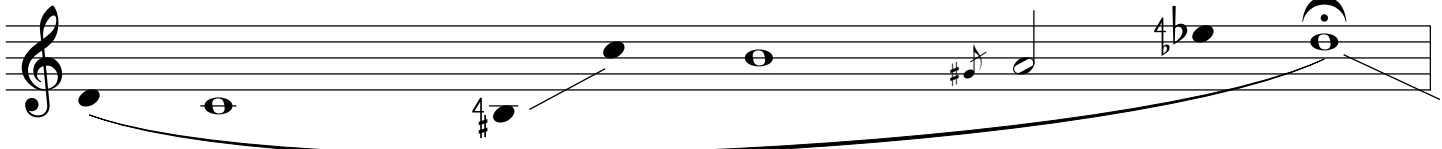
Cloud call 4



Cloud call 5



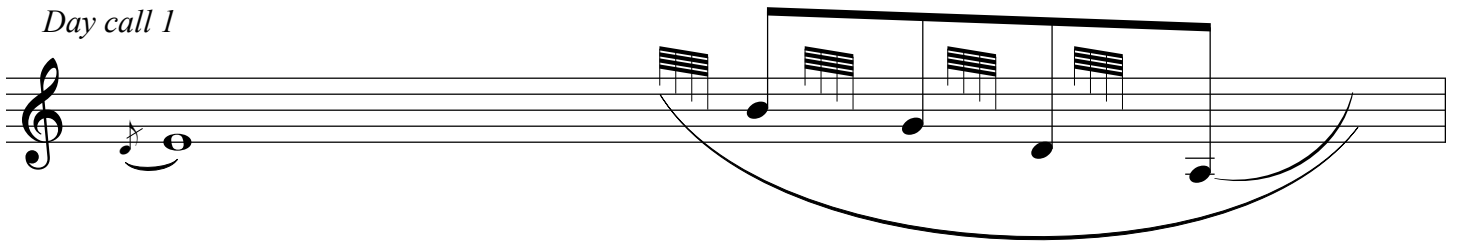
Cloud call 6



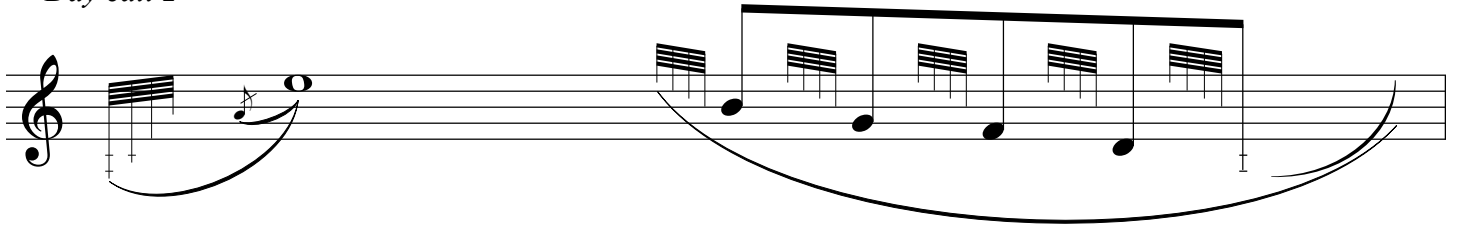
Cloud call 7



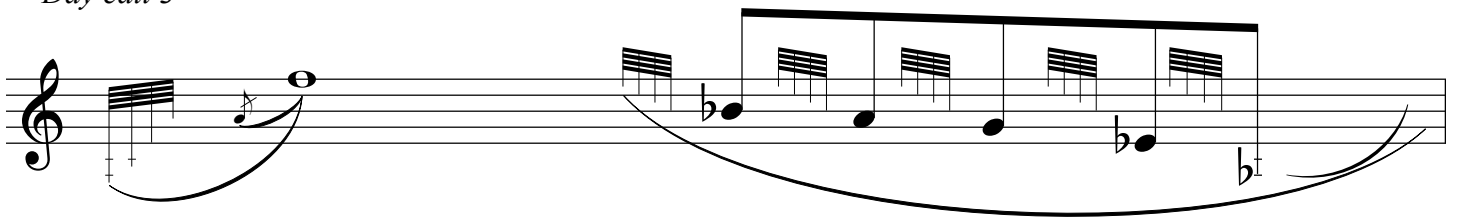
Day call 1



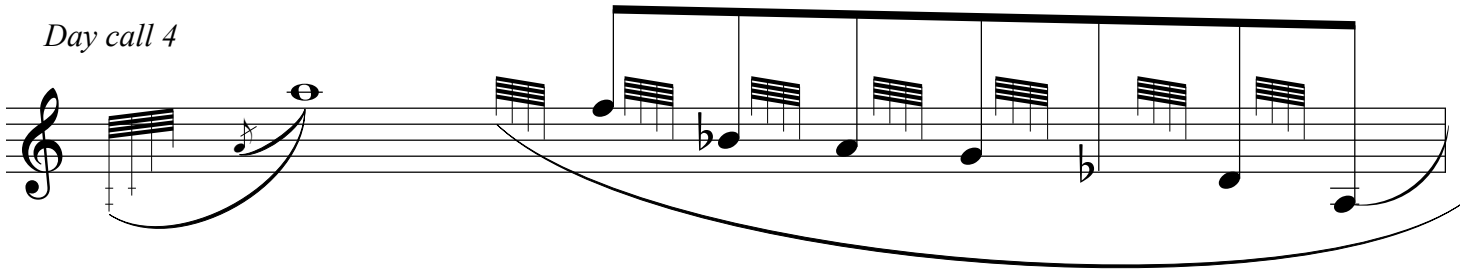
Day call 2



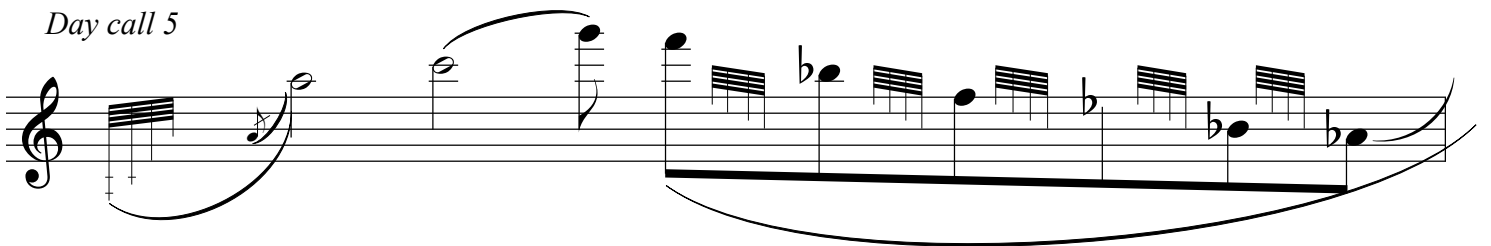
Day call 3



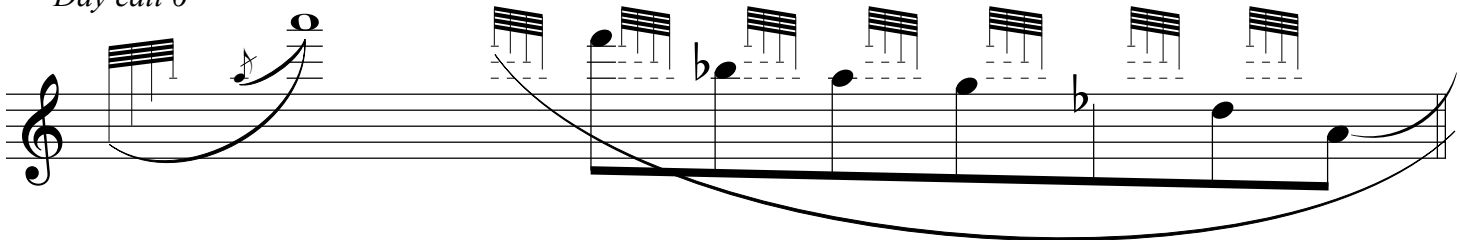
Day call 4



Day call 5



Day call 6



Cry Call 1

Musical notation for Cry Call 1, consisting of two measures on a single staff. The first measure begins with a treble clef and a key signature of one flat (B-flat). It contains a quarter rest, followed by a quarter note on G4, and a quarter note on B4. The second measure contains a quarter note on G4, a quarter note on B4, and a quarter note on G4. A slur spans the first two notes of the first measure, and another slur spans the first two notes of the second measure.

Cry Call 2

Musical notation for Cry Call 2, consisting of two measures on a single staff. The first measure begins with a treble clef and a key signature of one flat (B-flat). It contains a quarter rest, followed by a quarter note on G4, and a quarter note on B4. The second measure contains a quarter note on G4, a quarter note on B4, a quarter note on G4, a quarter note on B4, and a quarter note on G4. A slur spans the first two notes of the first measure, and another slur spans the first four notes of the second measure.

Cry Call 3

Musical notation for Cry Call 3, consisting of two measures on a single staff. The first measure begins with a treble clef and a key signature of one flat (B-flat). It contains a quarter rest, followed by a quarter note on G4, and a quarter note on B4. The second measure contains a quarter note on G4, a quarter note on B4, a quarter note on G4, a quarter note on B4, and a quarter note on G4. A slur spans the first two notes of the first measure, and another slur spans the first four notes of the second measure.

Cry Call 4

Musical notation for Cry Call 4, consisting of two measures on a single staff. The first measure begins with a treble clef and a key signature of one flat (B-flat). It contains a quarter rest, followed by a quarter note on G4, and a quarter note on B4. The second measure contains a quarter note on G4, a quarter note on B4, a quarter note on G4, a quarter note on B4, and a quarter note on G4. A slur spans the first two notes of the first measure, and another slur spans the first four notes of the second measure.

Cry Call 5

Musical notation for Cry Call 5, consisting of two measures on a single staff. The first measure begins with a treble clef and a key signature of one flat (B-flat). It contains a quarter rest, followed by a quarter note on G4, and a quarter note on B4. The second measure contains a quarter note on G4, a quarter note on B4, a quarter note on G4, a quarter note on B4, and a quarter note on G4. A slur spans the first two notes of the first measure, and another slur spans the first four notes of the second measure.