

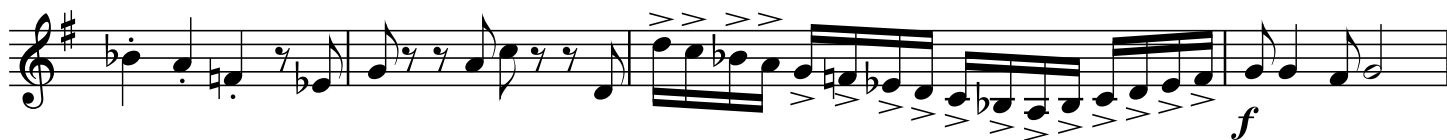
Bíhari Hatarszélén - Megy A Gözös Lefelé - Csárdás

Trumpet 2

Dennis Báthory-Kitsz, arr.

The musical score for Trumpet 2 is written in treble clef with a key signature of one sharp (F#) and a 4/4 time signature. It consists of eight staves of music, each starting with a measure number. The first staff begins at measure 1 with a tempo marking of ♩=60 and a dynamic of *p*. The second staff starts at measure 12 with a dynamic of *mf*. The third staff starts at measure 21 with a tempo marking of ♩=120 and a dynamic of *f*. The fourth staff starts at measure 26. The fifth staff starts at measure 31. The sixth staff starts at measure 36. The seventh staff starts at measure 41. The eighth staff starts at measure 45 and includes accent (>) markings above several notes. The music features a variety of rhythmic patterns, including eighth and sixteenth notes, and rests.

49



53



58



62



66



70



74



78



82

